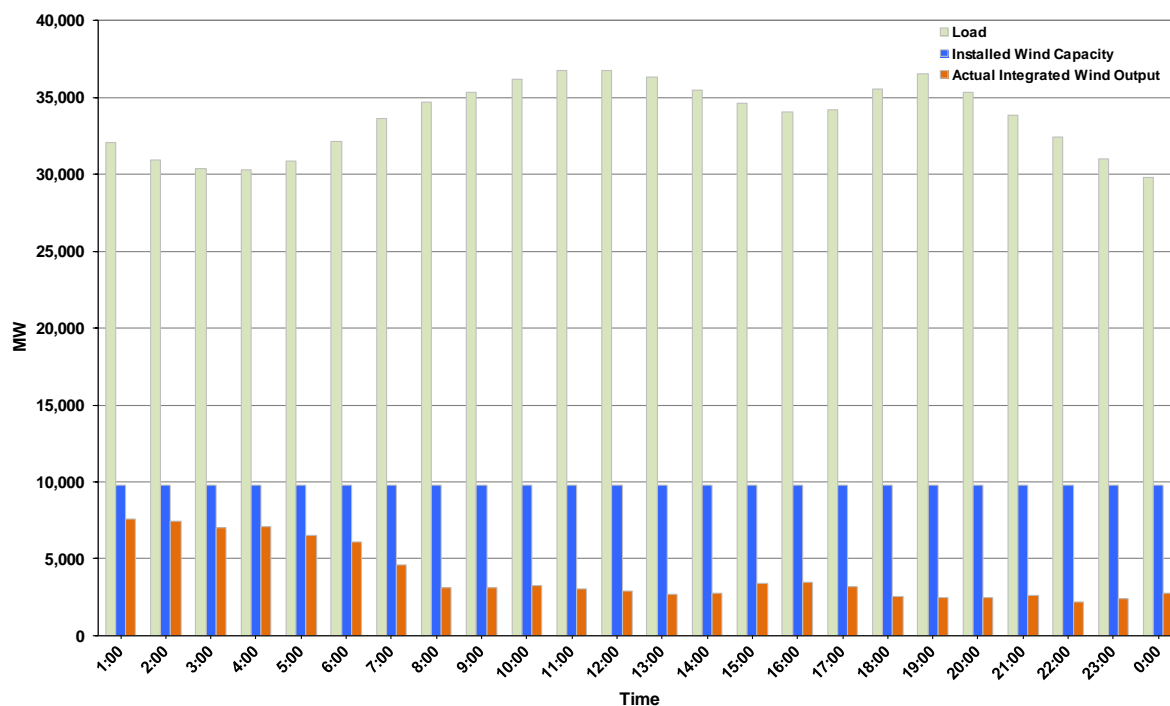




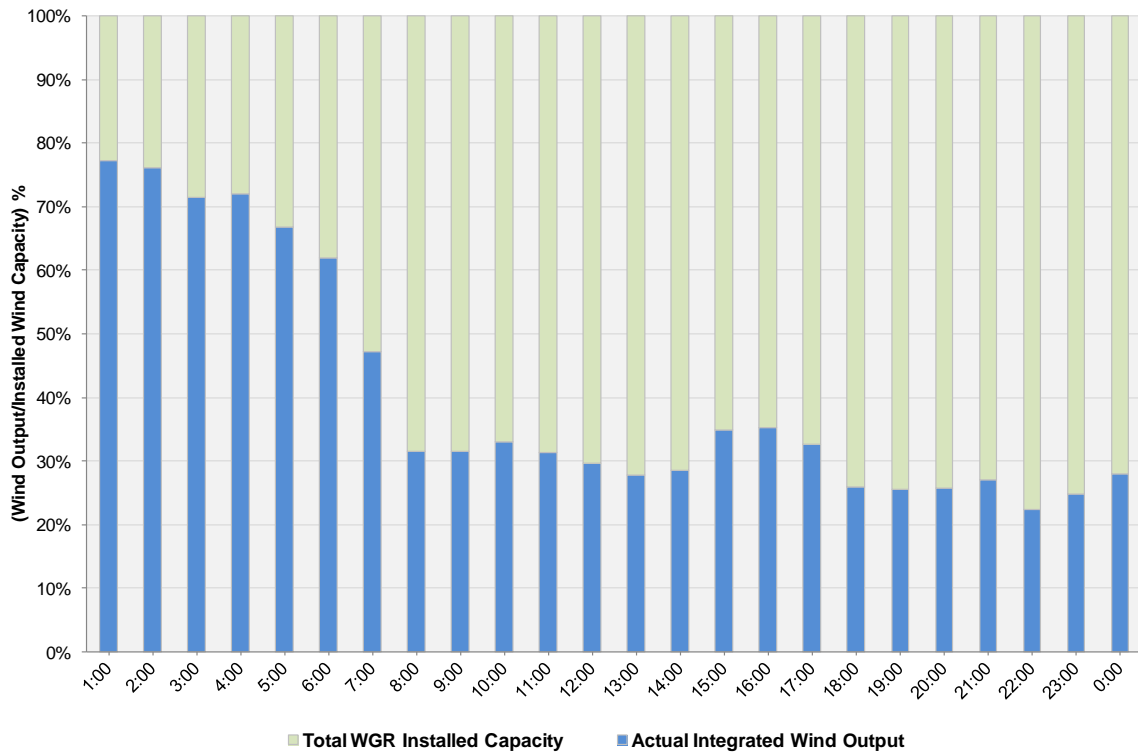
ERCOT Grid Operations Wind Integration Report: 12/31/2012

Peak Load	36,770 MW
Load Peak Hour (HE)	11
Wind over Peak	3,065 MW
Wind Record 12/25/12	8,638 MW
Max Wind Value	7,742 MW
Wind Peak Time	00:34
Wind Integration %	24.20%

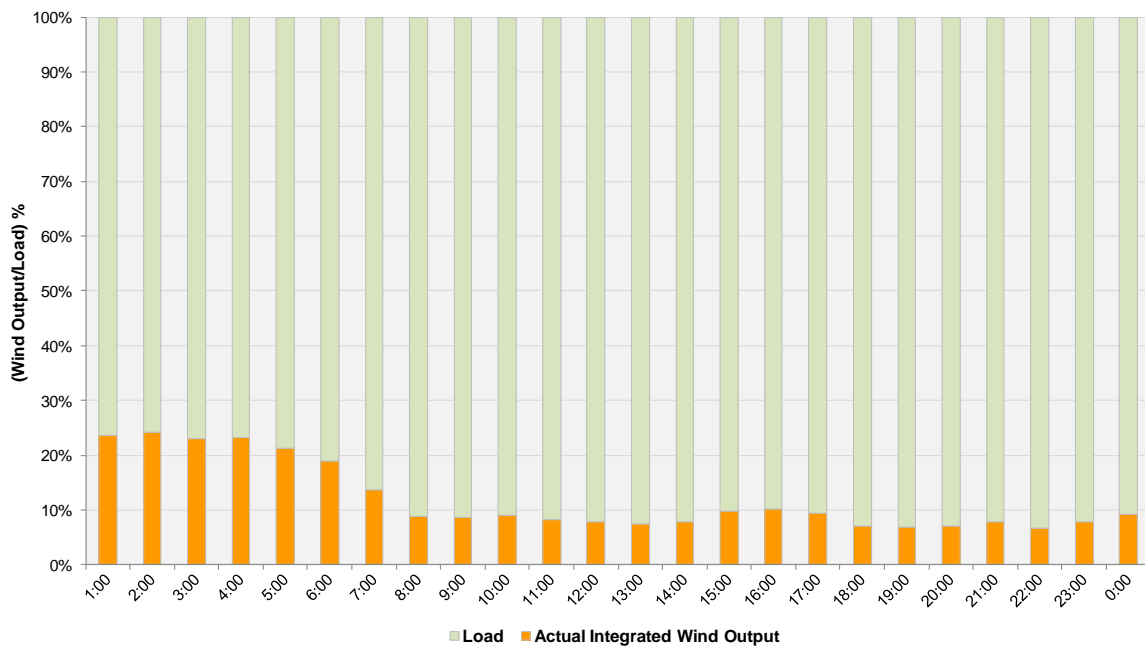
**Hourly Average Actual Load vs. Actual Wind Output
12-31-2012**



**Actual Wind Output as a Percentage of the Total Installed Wind Capacity
12-31-2012**



**Actual Wind Output as a Percentage of the ERCOT Load
12-31-2012**



ERCOT Load vs. Actual Wind Output 12/24/2012 - 12/31/2012

